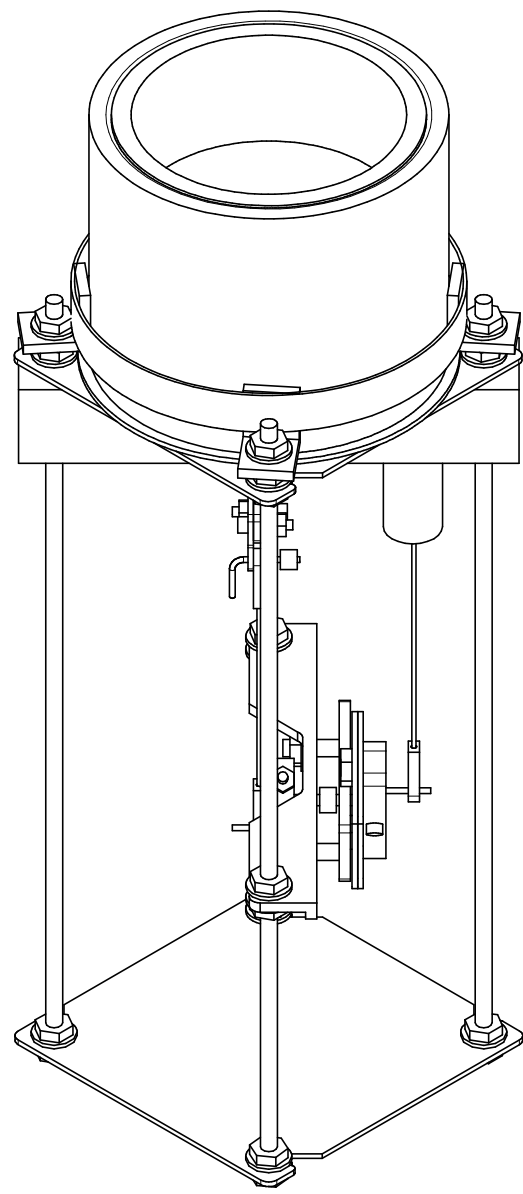
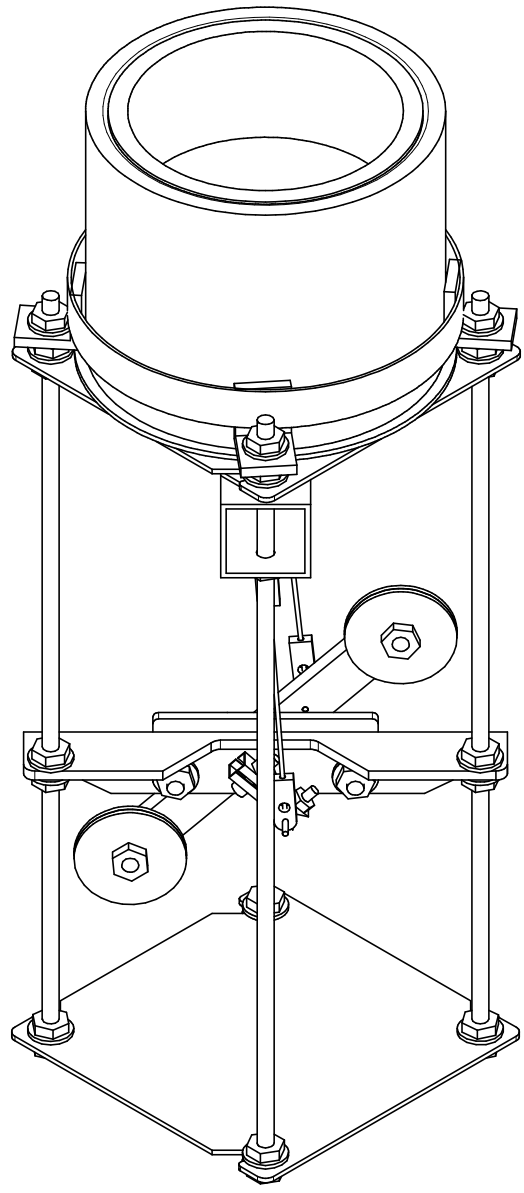




REVISIONS

REV	DESCRIPTION	DATE
-----	-------------	------



DRAWN D Conner	DATE 05/19/08
CHECKED	MFG
QA	APPROVED

Simple Stirling 1 engine
SolarHeatEngines.com

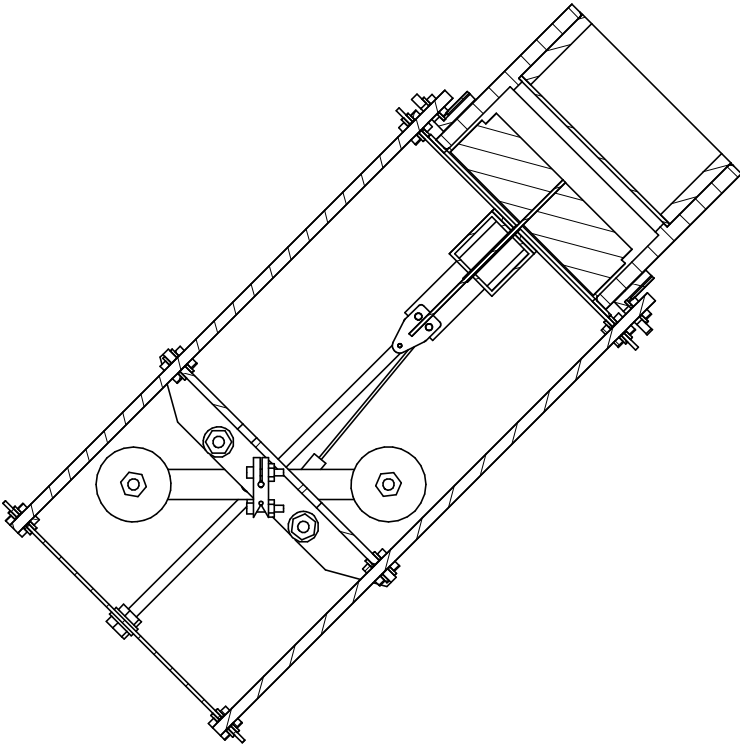
Top level assembly

This design by Doug Conner
 is licensed under a Creative Commons
 Attribution-Noncommercial 3.0 United States License

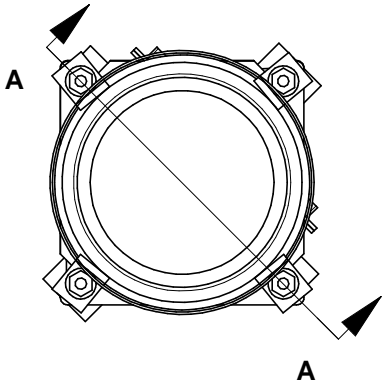
SIZE A		REV
SCALE		SHEET 1 of 4



REVISIONS		
REV	DESCRIPTION	DATE



Section A-A

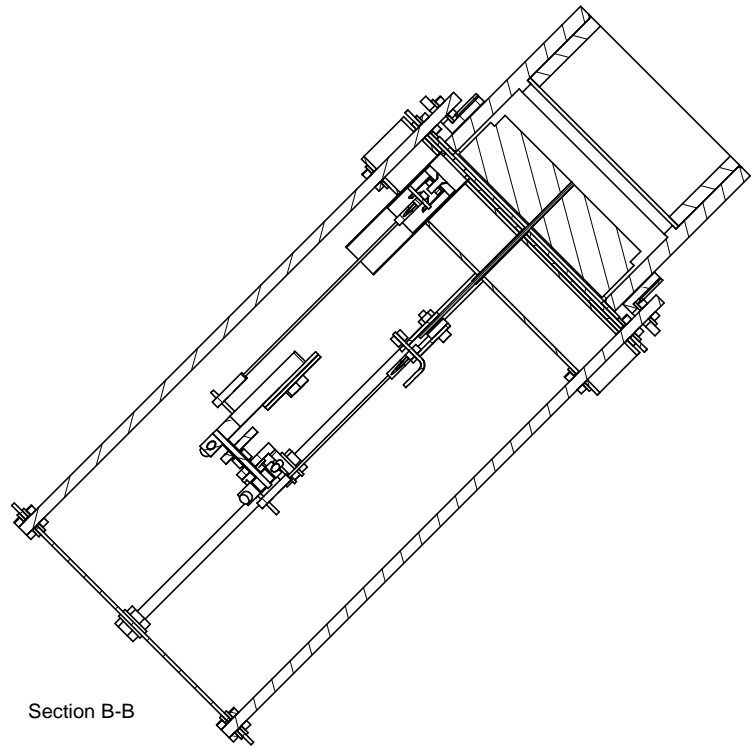
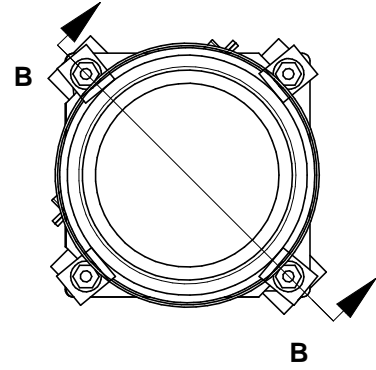


	DRAWN D Conner	DATE 05/19/08	Simple Stirling 1 engine SolarHeatEngines.com	
	CHECKED	MFG		
	QA	APPROVED		
Top level assembly			SIZE A	REV
This design by Doug Conner is licensed under a Creative Commons Attribution-Noncommercial 3.0 United States License			SCALE	SHEET 2 of 4



REVISIONS

REV	DESCRIPTION	DATE
-----	-------------	------



Section B-B



DRAWN D Conner	DATE 05/19/08
CHECKED	MFG
QA	APPROVED

Simple Stirling 1 engine
SolarHeatEngines.com

Top level assembly

This design by Doug Conner
 is licensed under a Creative Commons
 Attribution-Noncommercial 3.0 United States License

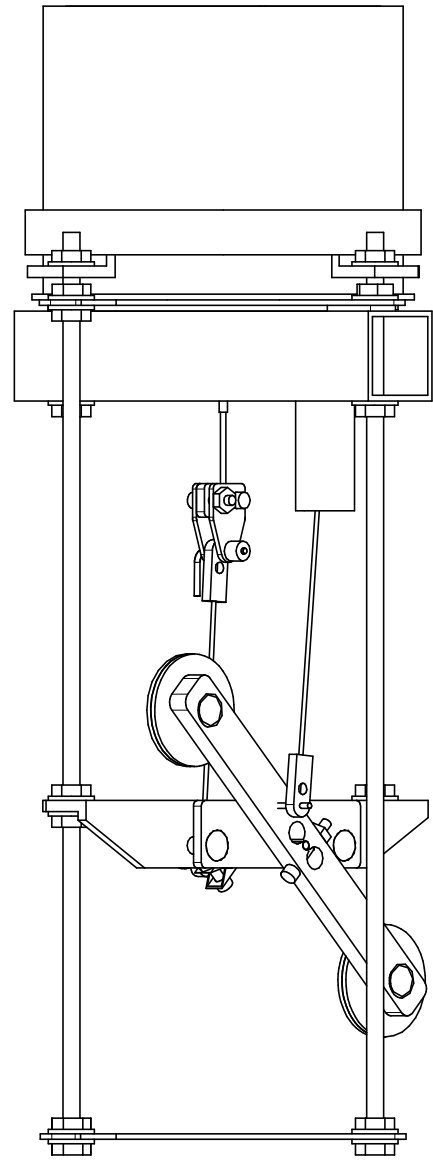
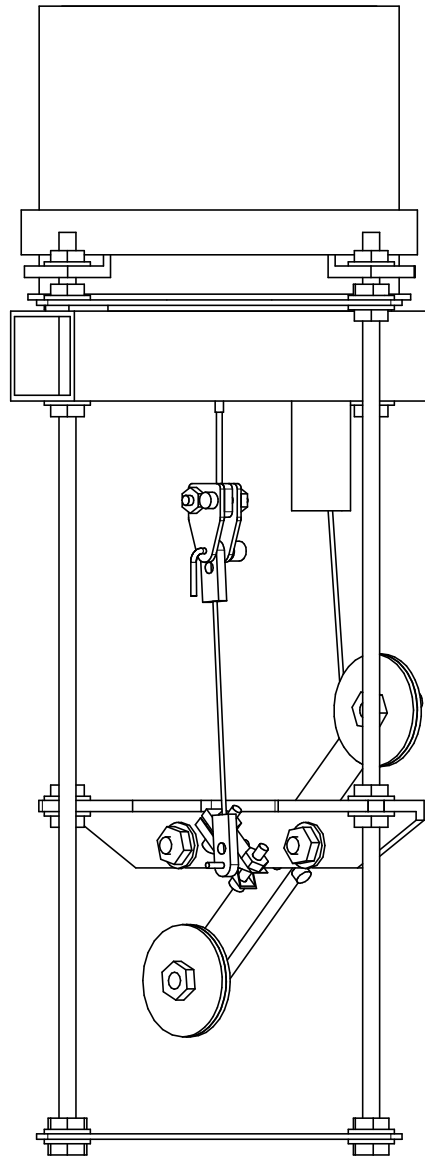
SIZE A		REV
SCALE		SHEET 3 of 4





REVISIONS

REV	DESCRIPTION	DATE



DRAWN D Conner	DATE 05/19/08
CHECKED	MFG
QA	APPROVED

Simple Stirling 1 engine
SolarHeatEngines.com

Top level assembly

This design by Doug Conner
 is licensed under a Creative Commons
 Attribution-Noncommercial 3.0 United States License

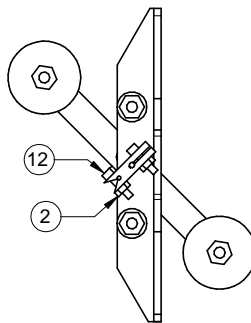
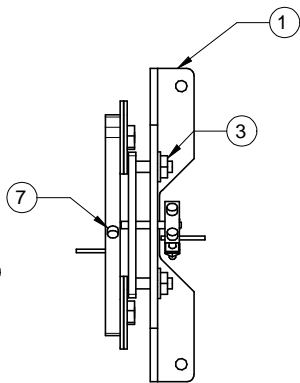
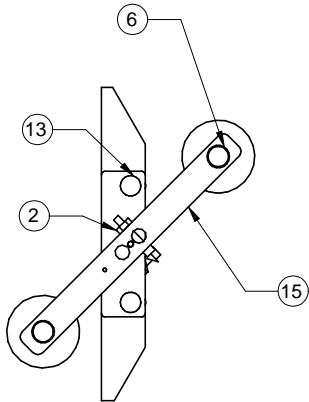
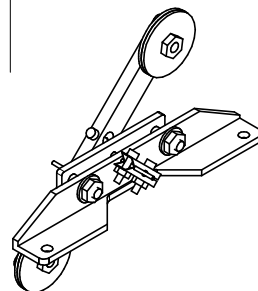
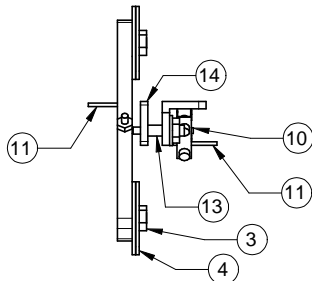
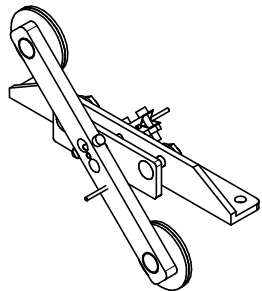
SIZE A	REV
SCALE	SHEET 4 of 4





REVISIONS

REV	DESCRIPTION	DATE
-----	-------------	------



Item Numl	Part Name	Quantity
1	Crankshaft support angle	1
2	No 4 nut	3
3	Nut 10-32	4
4	Washer No 10 x 1.25 fender	4
5	Crankshaft bearing tube	1
6	No 10 FH x .5	2
7	No 4 x .75 cap screw	1
8	Displacer Crank 2	1
9	wahser no 10	2
10	crankshaft	1
11	Crank pin	2
12	No 4 x .5 cap screw	2
13	No 10 FH x .75	2
14	Crankshaft support backup	1
15	Flywheel arm	1

	DRAWN D Conner	DATE 05/18/08
	CHECKED	MFG
	QA	APPROVED

Simple Stirling 1 engine
SolarHeatEngines.com

Crankshaft mounting block assembly

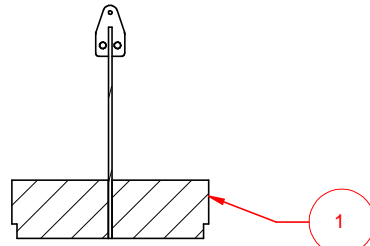
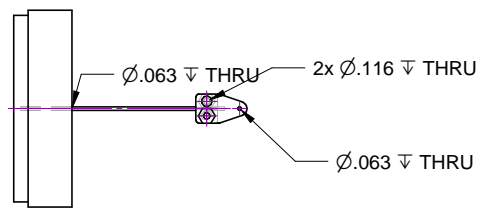
This design by Doug Conner is licensed under a Creative Commons Attribution-Noncommercial 3.0 United States License		SIZE A	DWG NO.	REV
		SCALE	SHEET	





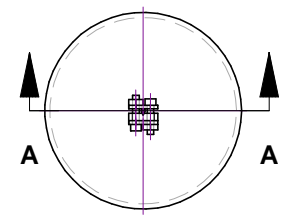
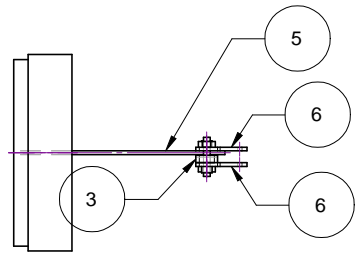
REVISIONS

REV	DESCRIPTION	DATE



Section A-A

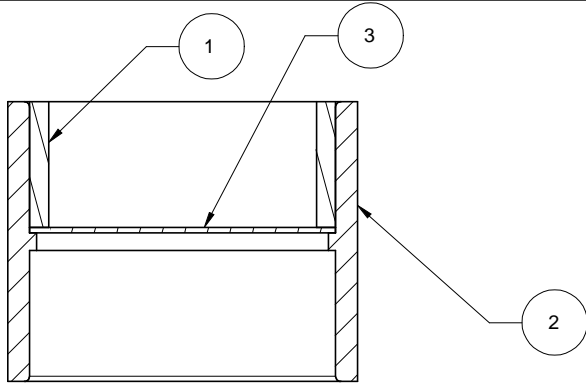
Notes:
1. Epoxy Displacer Shaft to Displacer.



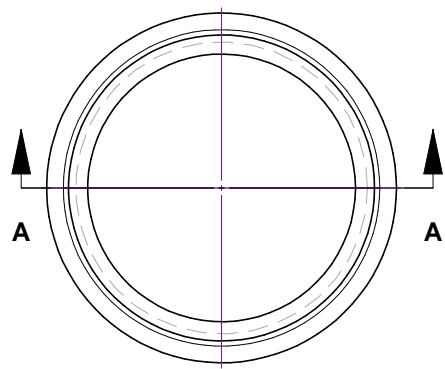
Item Numl	Part Name	Quantity
1	Displacer	1
2	No 4 nut	2
3	Displacer shaft fork center	1
4	No 4 x .5 cap screw	2
5	Displacer shaft	1
6	Displacer shaft fork	2

DRAWN D Conner	DATE 05/18/08	Simple Stirling 1 engine SolarHeatEngines.com			
	CHECKED				MFG
	QA	APPROVED	SIZE A	DWG NO.	REV
This design by Doug Conner is licensed under a Creative Commons Attribution-Noncommercial 3.0 United States License			SCALE	SHEET	





Section A-A



REVISIONS		
REV	DESCRIPTION	DATE

Item Numl	Part Name	Quantity
1	ABS 3 inch dia x 1.5	1
2	ABS Coupling 3 inch	1
3	hot plate	1

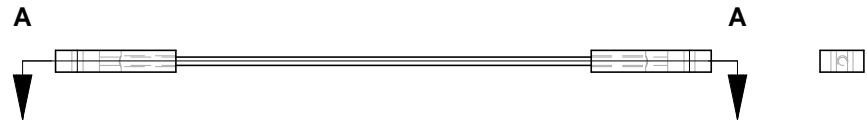
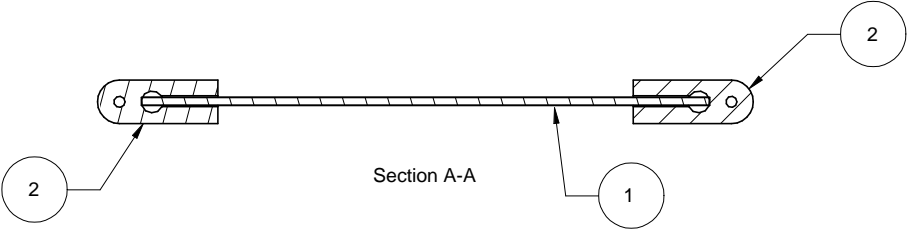
- Notes:
1. Glue 3 inch ABS Pipe inside 3 inch ABS Coupling with ABS cement, sandwiching Hot Plate against raised center section.
 2. Use adequate ABS cement to form an airtight/watertight seal between the upper and lower chambers.

DRAWN D Conner	DATE 05/18/08	Simple Stirling 1 engine SolarHeatEngines.com			
	CHECKED				MFG
	QA	APPROVED	Displacer Cylinder Assembly		
This design by Doug Conner is licensed under a Creative Commons Attribution-Noncommercial 3.0 United States License		SIZE A			
		SCALE		SHEET	



REVISIONS

REV	DESCRIPTION	DATE
-----	-------------	------



Item Numl	Part Name	Quantity
1	Displacer rod shaft	1
2	Rod end	2

Notes:
 1. Align rod end parts as shown and epoxy rod shaft to both rod ends.

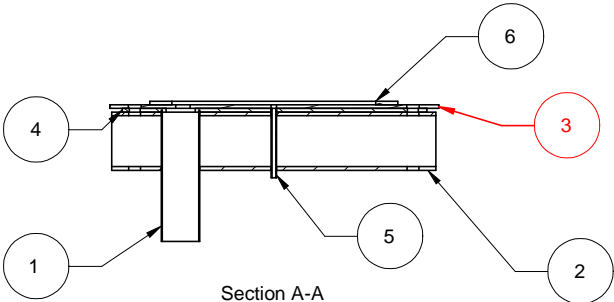
	DRAWN D Conner	DATE 05/18/08	<p align="center">Simple Stirling 1 engine SolarHeatEngines.com</p> <p align="center">Displacer Rod Assembly</p>		
	CHECKED	MFG			
	QA	APPROVED			
<p align="center">This design by Doug Conner is licensed under a Creative Commons Attribution-Noncommercial 3.0 United States License</p>			SIZE A	DWG NO.	REV
			SCALE	SHEET	



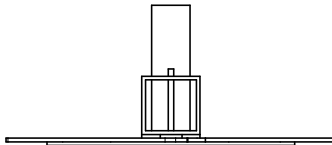
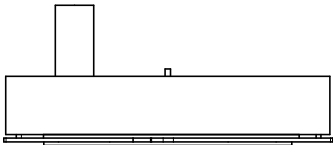
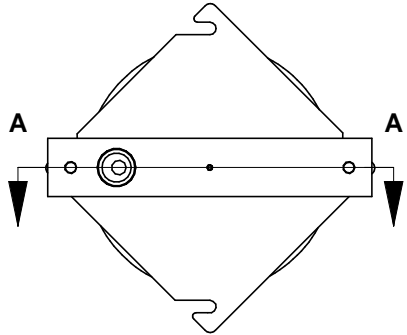


REVISIONS

REV	DESCRIPTION	DATE
-----	-------------	------



Section A-A

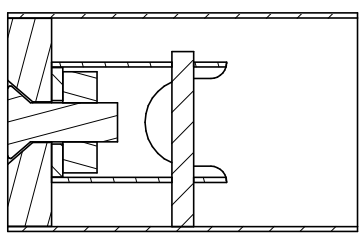
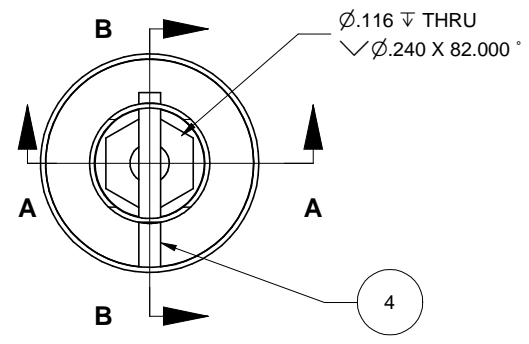
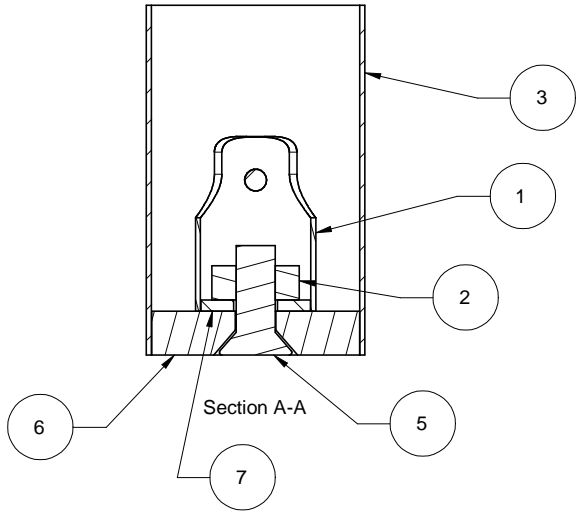


Notes:
 1. Epoxy Displacer Shaft Tube and Power Cylinder to Main Mounting Tube

Item Numl	Part Name	Quantity
1	Power cylinder	1
2	Main mounting tube	1
3	Cold plate	1
4	Main mounting tube gasket	1
5	Displacer shaft tube	1
6	Displacer gasket	1

	DRAWN D Conner	DATE 05/18/08	Simple Stirling 1 engine SolarHeatEngines.com		
	CHECKED	MFG			
	QA	APPROVED	SIZE A	DWG NO.	REV
This design by Doug Conner is licensed under a Creative Commons Attribution-Noncommercial 3.0 United States License			SCALE	SHEET	





REVISIONS		
REV	DESCRIPTION	DATE

Item Numl	Part Name	Quantity	Material	Description
1	Wrist pin bearing tube	1		
2	No 4 nut	1		
3	Power piston skirt	1		
4	Wrist Pin	1		
5	No 4 FH x .313	1		
6	Power piston top	1		
7	Washer No 4	1		

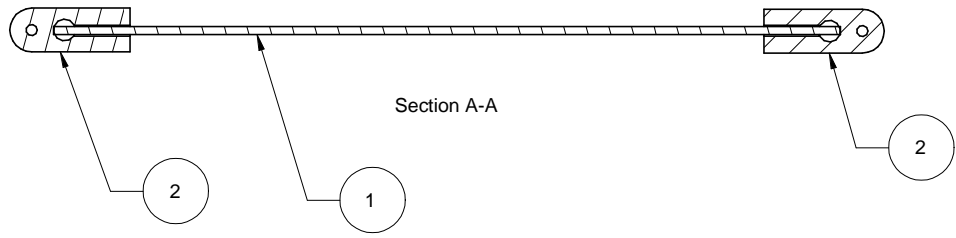
Notes:
 1. Epoxy wrist pin bearing tube to washer and nut.
 2. Epoxy power piston top to power piston skirt
 3. The power piston skirt must not be distorted out of round.
 The power piston top should be a loose slip fit in the power piston skirt

DRAWN D Conner	DATE 05/17/08	Simple Stirling 1 engine SolarHeatEngines.com		
	CHECKED			
	QA	APPROVED	Power Piston Assembly	
This design by Doug Conner is licensed under a Creative Commons Attribution-Noncommercial 3.0 United States License		SIZE A	DWG NO.	REV
		SCALE	SHEET	



REVISIONS

REV	DESCRIPTION	DATE
-----	-------------	------



Item Numl	Part Name	Quantity
1	Power piston rod shaft	1
2	Rod end	2

Notes:
 1. Align rod end parts as shown and epoxy rod shaft to both rod ends.

	DRAWN D Conner	DATE 05/18/08	Simple Stirling 1 engine SolarHeatEngines.com		
	CHECKED	MFG			
	QA	APPROVED	SIZE A	DWG NO.	REV
This design by Doug Conner is licensed under a Creative Commons Attribution-Noncommercial 3.0 United States License			SCALE	SHEET	

