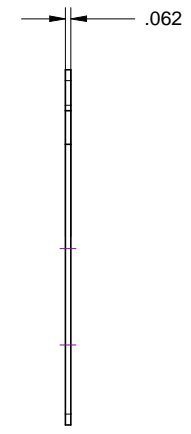
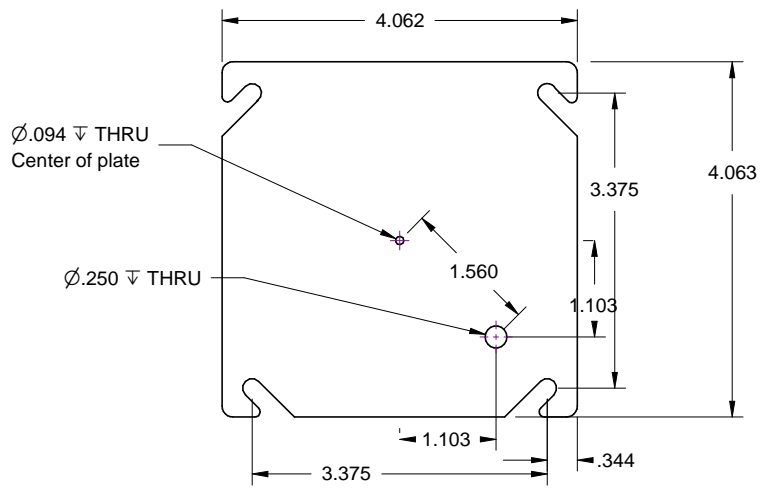




REVISIONS

REV	DESCRIPTION	DATE



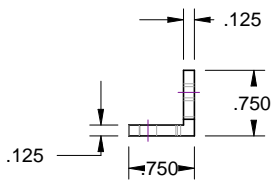
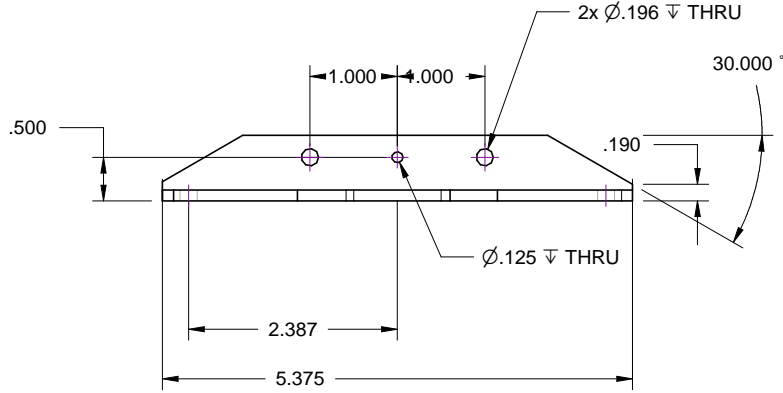
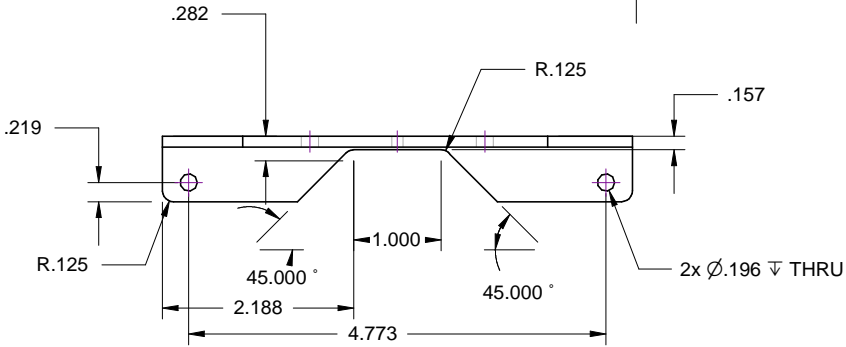
DRAWN D Conner	DATE 05/17/08	Simple Stirling 1 engine SolarHeatEngines.com		
	CHECKED			
	QA	APPROVED	Cold Plate	
This design by Doug Conner is licensed under a Creative Commons Attribution-Noncommercial 3.0 United States License		SIZE A		
		SCALE		SHEET





REVISIONS

REV	DESCRIPTION	DATE
-----	-------------	------



DRAWN D Conner	DATE 05/17/08
CHECKED	MFG
QA	APPROVED

Simple Stirling 1 engine
SolarHeatEngines.com

Crankshaft Support Angle

This design by Doug Conner
is licensed under a Creative Commons
Attribution-Noncommercial 3.0 United States License

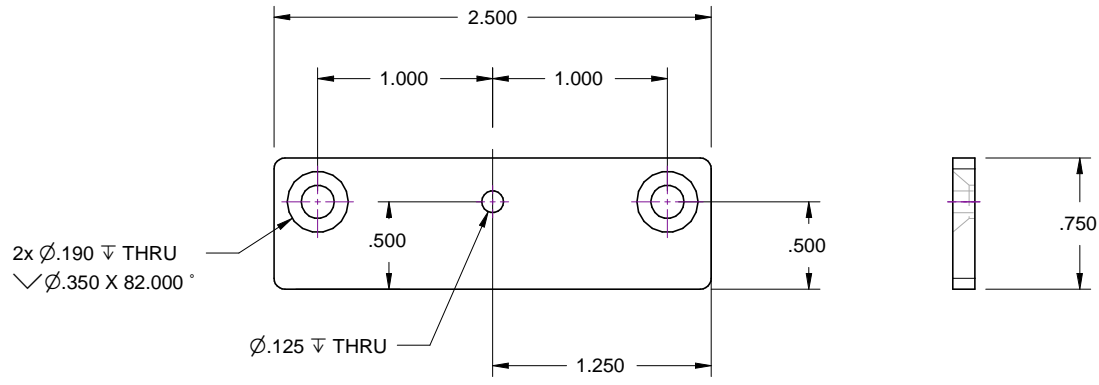
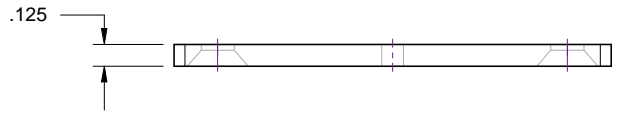
SIZE A	DWG NO.	REV
SCALE	SHEET	





REVISIONS

REV	DESCRIPTION	DATE
-----	-------------	------



Notes:

- 1. Match drill holes with Crankshaft Support Angle

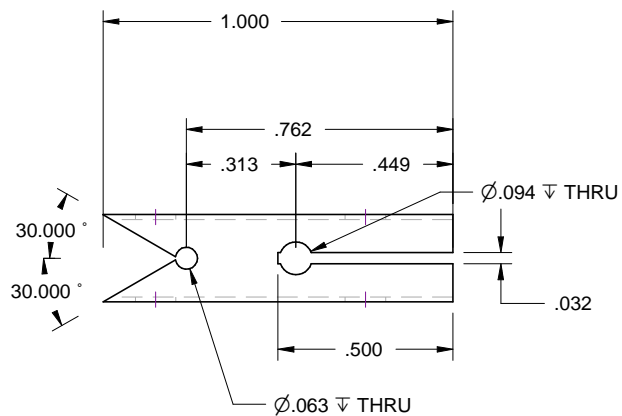
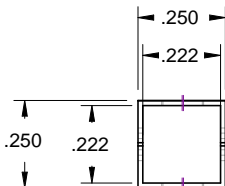
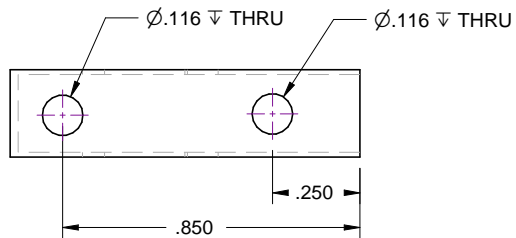
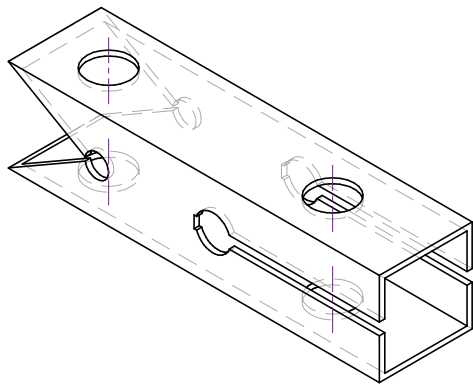
	DRAWN D Conner	DATE 05/17/08	Simple Stirling 1 engine SolarHeatEngines.com		
	CHECKED	MFG			
	QA	APPROVED	Crankshaft Support Backup		
This design by Doug Conner is licensed under a Creative Commons Attribution-Noncommercial 3.0 United States License			SIZE A	DWG NO.	REV
			SCALE	SHEET	





REVISIONS

REV	DESCRIPTION	DATE
-----	-------------	------



Notes:
1. 032 slit width is not critical.

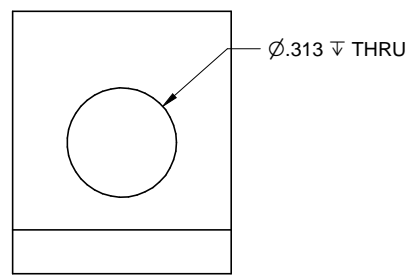
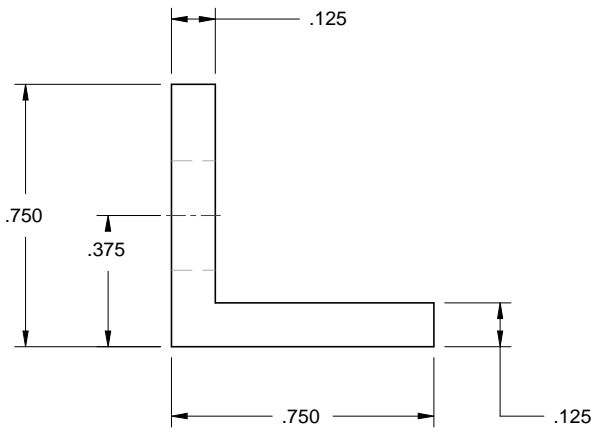
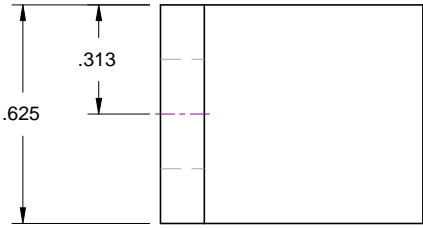
	DRAWN D Conner	DATE 05/18/08	Simple Stirling 1 engine SolarHeatEngines.com		
	CHECKED	MFG			
	QA	APPROVED	SIZE A	DWG NO.	REV
This design by Doug Conner is licensed under a Creative Commons Attribution-Noncommercial 3.0 United States License			SCALE	SHEET	





REVISIONS

REV	DESCRIPTION	DATE
-----	-------------	------



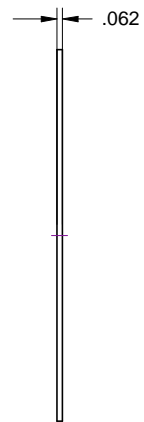
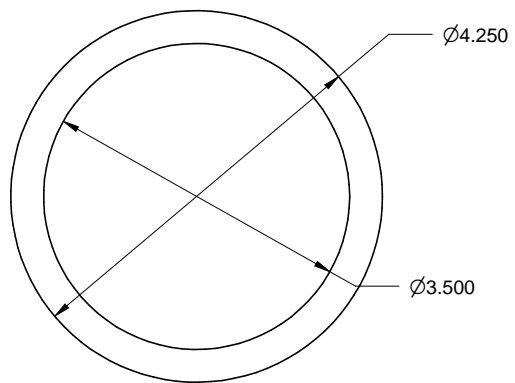
	DRAWN D Conner	DATE 05/18/08	Simple Stirling 1 engine SolarHeatEngines.com		
	CHECKED	MFG			
	QA	APPROVED	SIZE A	DWG NO.	REV
This design by Doug Conner is licensed under a Creative Commons Attribution-Noncommercial 3.0 United States License			SCALE	SHEET	





REVISIONS

REV	DESCRIPTION	DATE



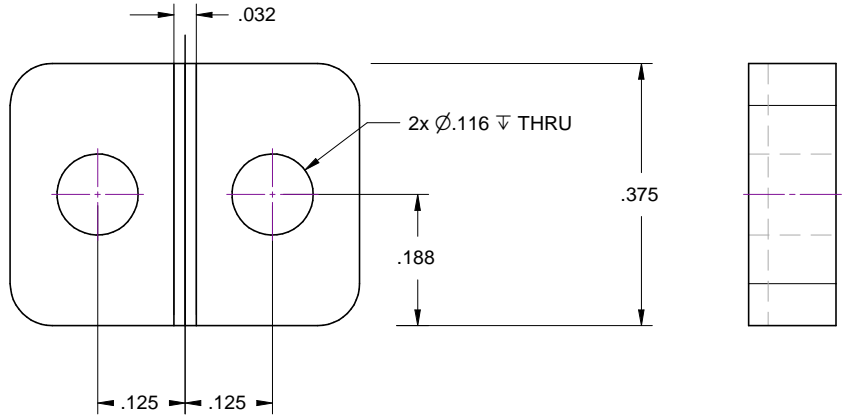
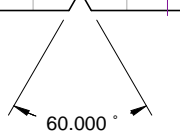
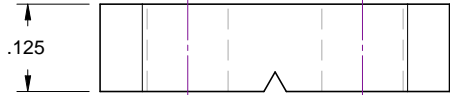
	DRAWN D Conner	DATE 05/18/08	Simple Stirling 1 engine SolarHeatEngines.com		
	CHECKED	MFG			
	QA	APPROVED	SIZE A	DWG NO.	REV
This design by Doug Conner is licensed under a Creative Commons Attribution-Noncommercial 3.0 United States License			SCALE	SHEET	





REVISIONS

REV	DESCRIPTION	DATE



- Notes:
 1. V-groove may be cut with triangular file.
 2. Match-drill holes with Displacer Shaft Fork parts

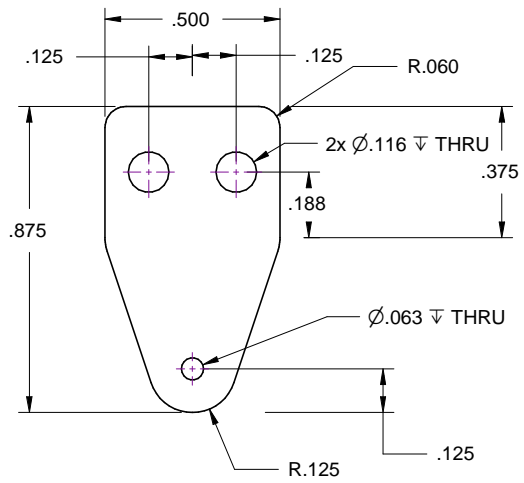
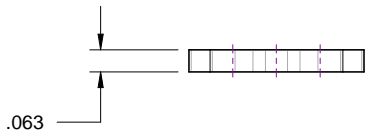
DRAWN D Conner	DATE 05/18/08	Simple Stirling 1 engine SolarHeatEngines.com		
	CHECKED			
	QA	APPROVED	Displacer Shaft Fork Center	
This design by Doug Conner is licensed under a Creative Commons Attribution-Noncommercial 3.0 United States License		SIZE A		
		SCALE		SHEET





REVISIONS

REV	DESCRIPTION	DATE
-----	-------------	------



- Notes:
1. Match drill all three holes with second Displacer shaft fork part.
 2. Match drill two large holes with Displacer shaft fork center.

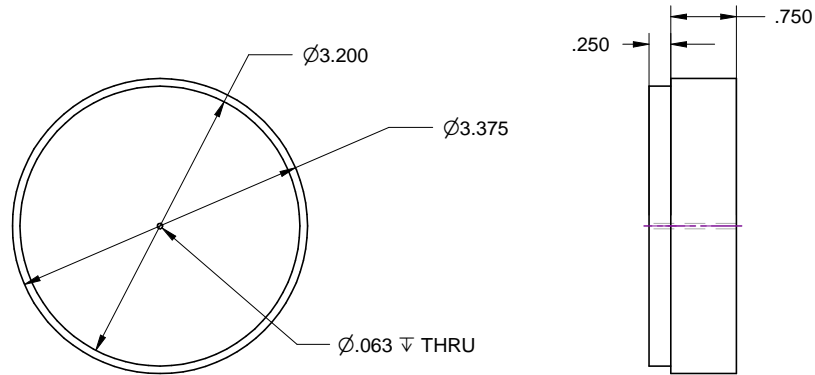
	DRAWN D Conner	DATE 05/18/08	Simple Stirling 1 engine SolarHeatEngines.com		
	CHECKED	MFG			
	QA	APPROVED	SIZE A	DWG NO.	REV
This design by Doug Conner is licensed under a Creative Commons Attribution-Noncommercial 3.0 United States License			SCALE	SHEET	





REVISIONS

REV	DESCRIPTION	DATE



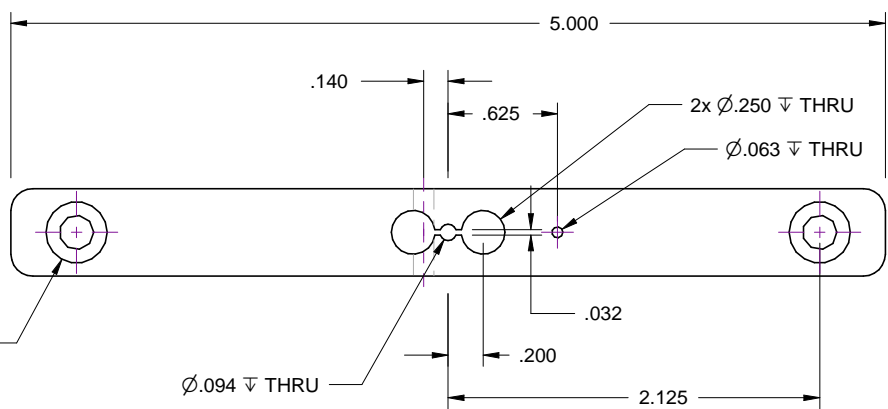
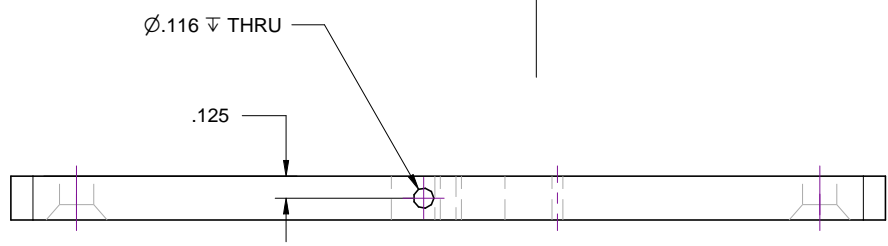
	DRAWN D Conner	DATE 05/18/08	Simple Stirling 1 engine SolarHeatEngines.com		
	CHECKED	MFG			
	QA	APPROVED	SIZE A	DWG NO.	REV
This design by Doug Conner is licensed under a Creative Commons Attribution-Noncommercial 3.0 United States License			SCALE	SHEET	



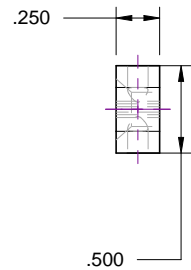


REVISIONS

REV	DESCRIPTION	DATE
-----	-------------	------



2x $\varnothing.196 \nabla$ THRU
 $\surd \varnothing.350 \times 82.000^\circ$



Notes:
 1. The .032 slit can be cut with a triangle file.

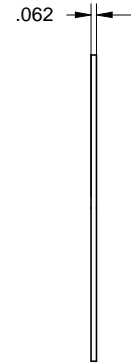
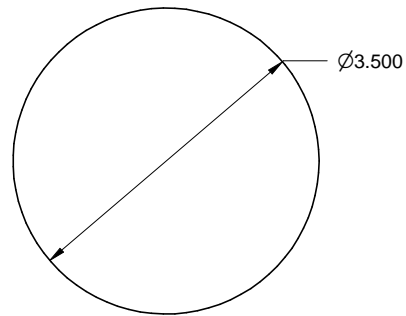
	DRAWN D Conner	DATE 05/17/08	Simple Stirling 1 engine SolarHeatEngines.com		
	CHECKED	MFG			
	QA	APPROVED	SIZE A	DWG NO.	REV
This design by Doug Conner is licensed under a Creative Commons Attribution-Noncommercial 3.0 United States License			SCALE	SHEET	





REVISIONS

REV	DESCRIPTION	DATE



Notes:
1. Part may be cut from and extra Cover Plate

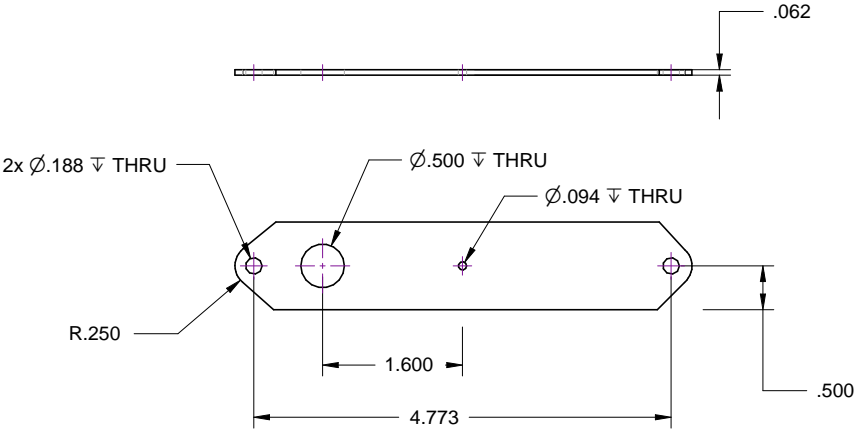
DRAWN D Conner	DATE 05/18/08	Simple Stirling 1 engine SolarHeatEngines.com			
	CHECKED				MFG
	QA	APPROVED	Hot Plate		
This design by Doug Conner is licensed under a Creative Commons Attribution-Noncommercial 3.0 United States License		SIZE A			
		SCALE		SHEET	





REVISIONS

REV	DESCRIPTION	DATE
-----	-------------	------



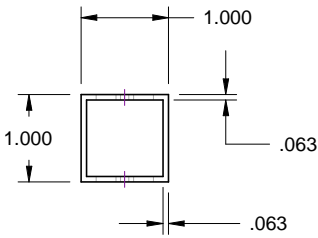
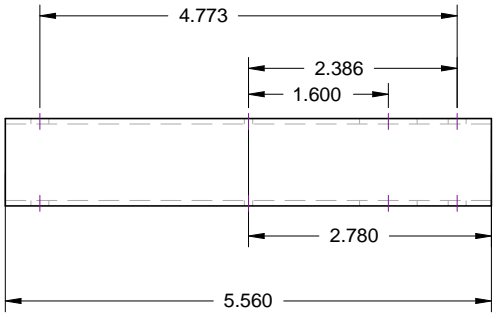
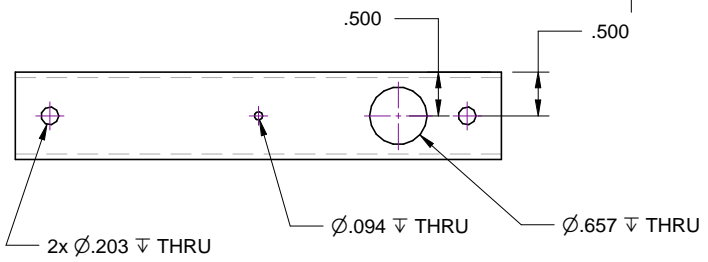
	DRAWN D Conner	DATE 05/18/08	Simple Stirling 1 engine SolarHeatEngines.com		
	CHECKED	MFG			
	QA	APPROVED	SIZE A	DWG NO.	REV
This design by Doug Conner is licensed under a Creative Commons Attribution-Noncommercial 3.0 United States License			SCALE	SHEET	





REVISIONS

REV	DESCRIPTION	DATE
-----	-------------	------



- Notes:
1. The Power Cylinder hole does not need to be accurately finished, it can be filed from a smaller drill hole. The cylinder will be epoxied in place. The cylinder should fit freely in the hole so as not to distort it out of round.
 2. The center hole should be match-drilled with the cold plate.

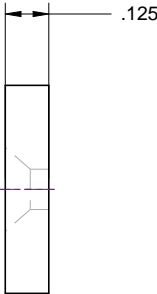
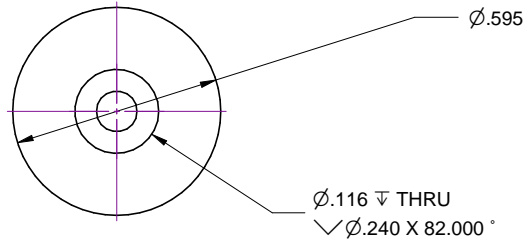
	DRAWN D Conner	DATE 05/17/08	Simple Stirling 1 engine SolarHeatEngines.com		
	CHECKED	MFG			
	QA	APPROVED	SIZE A	DWG NO.	REV
This design by Doug Conner is licensed under a Creative Commons Attribution-Noncommercial 3.0 United States License			SCALE	SHEET	





REVISIONS

REV	DESCRIPTION	DATE



Notes:
 1. The outside diameter is not critical. This part must be a loose slip-fit into the power piston skirt without distorting the skirt out of round.

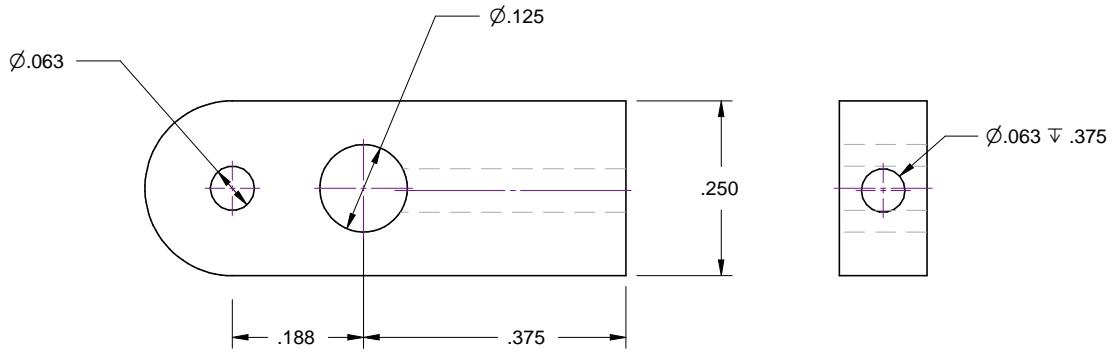
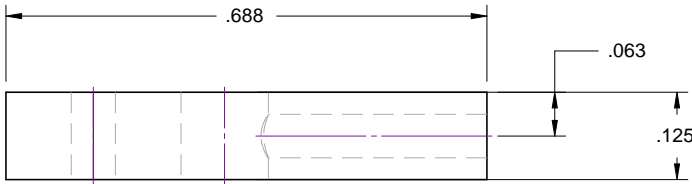
DRAWN D Conner	DATE 05/18/08	Simple Stirling 1 engine SolarHeatEngines.com		
	CHECKED			
	QA	APPROVED	Power piston top	
This design by Doug Conner is licensed under a Creative Commons Attribution-Noncommercial 3.0 United States License		SIZE A		
		SCALE		SHEET





REVISIONS

REV	DESCRIPTION	DATE



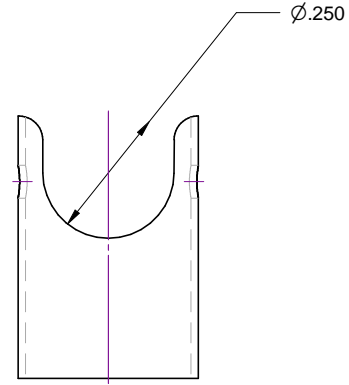
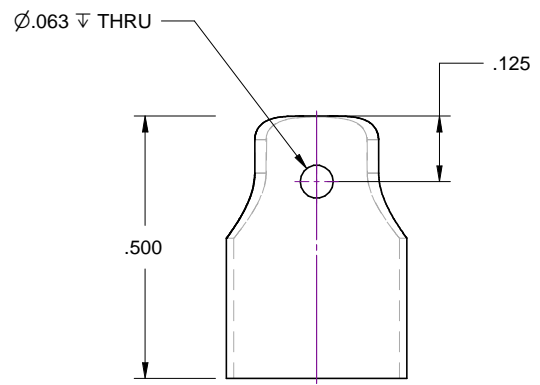
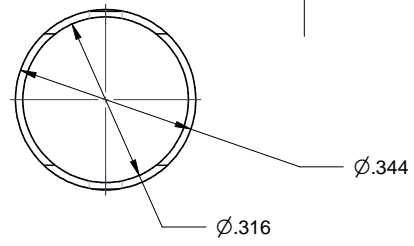
DRAWN D Conner	DATE 05/18/08	Simple Stirling 1 engine SolarHeatEngines.com		
	CHECKED			
	QA	APPROVED	Rod end	
This design by Doug Conner is licensed under a Creative Commons Attribution-Noncommercial 3.0 United States License		SIZE A		
		SCALE		SHEET





REVISIONS

REV	DESCRIPTION	DATE
-----	-------------	------



Notes:
1. Round top of tube for rod end clearance as needed.

	DRAWN D Conner	DATE 05/18/08	Simple Stirling 1 engine SolarHeatEngines.com		
	CHECKED	MFG			
	QA	APPROVED	SIZE A	DWG NO.	REV
This design by Doug Conner is licensed under a Creative Commons Attribution-Noncommercial 3.0 United States License			SCALE	SHEET	

